



GMT MONTHLY MEMBERSHIP PROGRESS REPORT

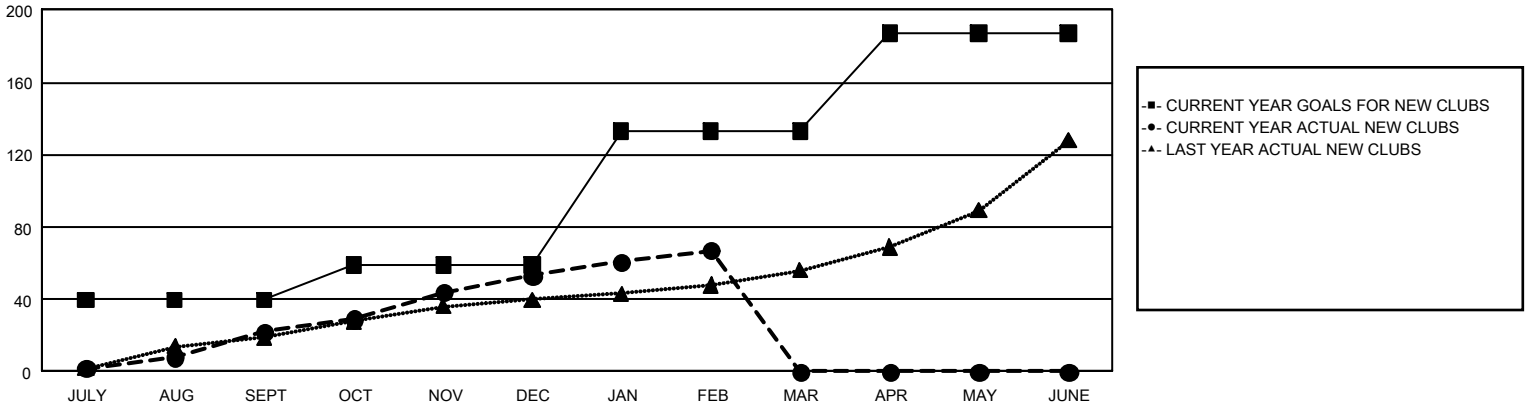
GAT Constitutional Area 3

Results as of: 2/29/2024

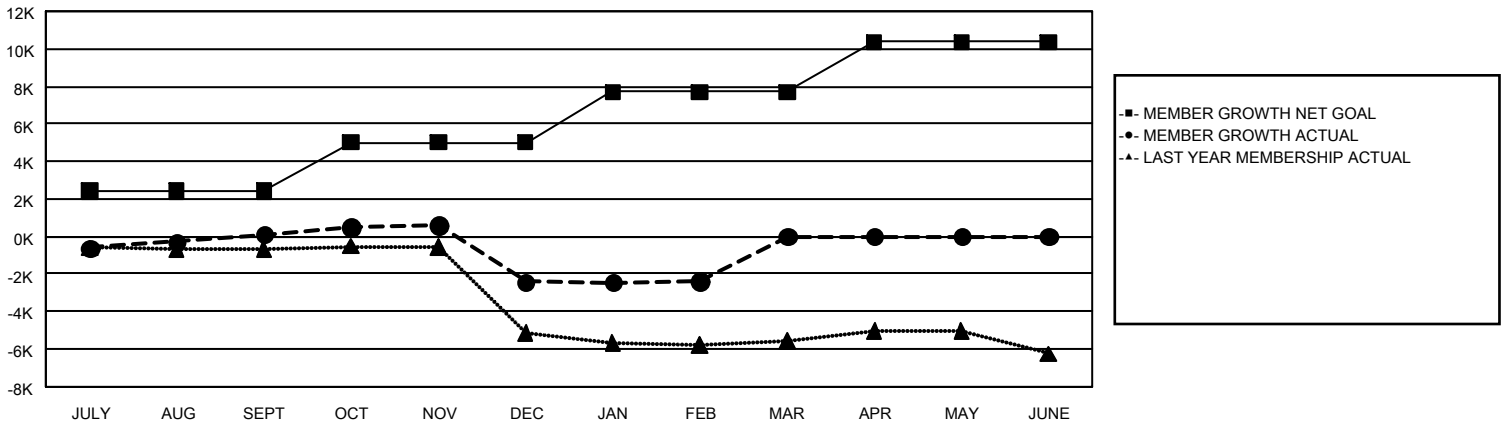
REPORT DOES NOT INCLUDE CLUBS IN UNDISTRICTED AREAS.

Clubs				Members			
RESULTS FOR 2023-2024				RESULTS FOR 2023-2024			
QUARTER	NEW CLUB GOAL	NEW CLUBS	DROPPED CLUBS	QUARTER	MEMBER GROWTH NET GOAL	MEMBER GROWTH ACTUAL	DROPPED MEMBERS ACTUAL (including transfers)
JULY/AUG/SEPT	40	22	38	JULY/AUG/SEPT	2,394	3,655	3,166
OCT/NOV/DEC	19	31	70	OCT/NOV/DEC	2,611	3,700	5,910
JAN/FEB/MAR	74	14	24	JAN/FEB/MAR	2,708	1,864	1,498
APR/MAY/JUNE	54	0	0	APR/MAY/JUNE	2,654	0	0

GOALS AND ACTUAL NEW CLUBS CUMULATIVE



GOALS AND ACTUAL MEMBERS CUMULATIVE



DROPPED CLUBS: 132

1,907 CLUBS OF 4,312 ADDED 1 OR MORE NEW MEMBERS

GENDER DISTRIBUTION

MALE 47,125 (46.97%)
FEMALE 53,159 (52.98%)

DROPPED MEMBERS

DECEASED	529
CLUB CANCELLED	1,346
OTHER	8,703
TOTAL	10,578

[CLICK HERE FOR CUMULATIVE MEMBERSHIP DATA](#)

TOTAL FAMILY UNIT MEMBERS	37,695
FAMILY MEMBERS PAYING HALF DUES	20,966